

Simparica: Key Benefits



Persistent flea & tick killing activity for at least 35 days¹



Kills fleas fast before they can lay eggs¹



Only Simparica is indicated for 99% of ticks found in the UK^{1,5}



Extended ectoparasite spectrum



Well tolerated in dogs from 8 weeks and 1.3kg¹



Key component in your dermatology solution



Palatable tablet readily accepted with or without food



Simparica chewable tablets for dogs contains 5, 10, 20, 40 or 80 mg sarolaner. Indicated for the treatment of flea & tick infestations and the treatment of sarcoptic mange. For information about side effects, precautions, warnings and contra-indications for this product, please refer to the product packaging and package leaflet. Simparica does not require any special storage conditions. Keep out of the sight and reach of children. For animal treatment only.

References:

1. Simparica SPC. 2. UK pet owner testing, November 4, 2015, prepared by the link group. 3. Six, R.H., Geurden, T., Packianathan, R., Colgan, S., Everett, W.R., Grace, S., Hodge, A., Mahabir, S.P., Myers, M.R., Sloomans, N., Davis, K. (2016) 'Evaluation of the effectiveness of a novel oral formulation of sarolaner (Simparica™) for the treatment and control of fleas on dogs' *Vet. Parasitol.* 222 pp.18-22 4. Six, R.H., Becskei, C., Carter, L., Gale, B., Young, D.R., Mahabir, S.P., Chapin, S. and Myers, M.R. (2016) 'Evaluation on the speed of kill, effects on reproduction, and effectiveness in a simulated infested-home environment of sarolaner (Simparica™) against fleas on dogs' *Vet. Parasitol.* 222 pp. 23-27 5. Calculated from the Health Protection Agency National Tick Recording Scheme, Bristol University tick ID, BADA UK and the Merck manual. 6. Tick distribution map for Ixodes ricinus, as recorded by the PHE Tick Recording Scheme, and the Biological Records Centre (BRC). Added/updated: 14 October 2013. 7. Tick distribution map for Dermacentor reticulatus, as recorded by the HPA Tick Recording Scheme, and the Biological Records Centre (BRC). Added/updated: 14 October 2013. 8. Tick distribution map for Ixodes hexagonus, as recorded by the PHE Tick Recording Scheme, and the Biological Records Centre (BRC). Added/updated: 14 October 2013. 9. Tick distribution map for Rhipicephalus sanguineus - https://data.nbn.org.uk/Taxa/NBNSYS0000039964/Grid_Map. 10. Geurden, T., Becskei, C., Grace, S., Strube, C., Doherty, P., Liebenberg, J., Mahabir, S.P., Sloomans, N., Lloyd, A. and Six, R.H. (2016) 'Efficacy of a novel oral formulation of sarolaner (Simparica™) against four common tick species infesting dogs in Europe' *Vet. Parasitol.* 222 pp.33-36 11. Six, R.H., Geurden, T., Carter, L., Everett, W.R., McLoughlin, A., Mahabir, S.P., Myers, M.R. and Sloomans, N. (2016) 'Evaluation of the speed of kill of sarolaner (Simparica™) against induced infestations of three species of ticks (*Amblyomma maculatum*, *Ixodes scapularis*, *Ixodes ricinus*) on dogs' *Vet. Parasitol.* 222 pp. 37-42 12. Becskei, C., De Bock, F., Illambas, J., Cherni, J.A., Fourie, J. J., Lane, M., Mahabir, S.P., Six, R. H., (2016) 'Efficacy and safety of a novel oral isoxazoline, sarolaner (Simparica™), for the treatment of sarcoptic mange in dogs' *Vet. Parasitol.* 222 pp. 56-61 13. Six, R.H., Becskei, C., Mazaleski, M.M., Fourie, J. J., Lane, M., Mahabir, S.P., Myers, M.R., Sloomans, N., (2016) 'Efficacy of sarolaner, a novel oral isoxazoline, against two common mite infestations in dogs: *Demodex* spp. and *Otodectes cynotis*' *Vet. Parasitol.* 222 pp. 62-66 14. Zoetis Study A161C-XC-12-083 15. NexGard Spectra SPC. 16. Comfortis SPC. 17. Bravecto SPC. 18. Advocate SPC. 19. Frontline Combo SPC.

Further information is also available from the Summary of Product Characteristics, or please contact Zoetis UK Ltd, Walton Oaks, Tadworth, Surrey KT20 7NS [POM-V]

www.zoetis.co.uk Customer Support: 0845 300 8034

Zoetis Ireland Ltd, 9 Riverwalk, Citywest Business Campus, Dublin 24 [POM] Use medicines responsibly (www.noah.co.uk/responsible).

Date of preparation June 2016.

AH356/16

zoetis

**Kill fleas and ticks immediately
from start to finish...and beyond.**

Not all parasiticides are created equally

Simparica® is a tasty chew for dogs that delivers new advances in flea, tick and mite control, helping to deliver improved client and patient satisfaction.

Simparica brings a new innovative way to keep on top of fleas and ticks by providing immediate and persistent killing activity for at least 35 days¹, acting beyond the monthly treatment period.

63% of pet owners confess to have given flea & tick treatment later than when it was due, with the median being 5 days late.² Simparica's extended duration of activity helps minimise the potential risk of protection gaps.

When choosing an ectoparasiticide key areas to consider include:



➤ Action against the most prevalent species



➤ Persistent killing activity



➤ Immediate sustained killing activity

How does Simparica perform on fleas?



Action against the most prevalent species

Simparica is effective against both *Ctenocephalides felis* and *Ctenocephalides canis* flea infestations in dogs.¹

Simparica was shown to have 100% efficacy for 35 days against the laboratory **flea strain KS1**.³ This strain has demonstrated reduced susceptibility to insecticides such as fipronil, imidacloprid and permethrin.³



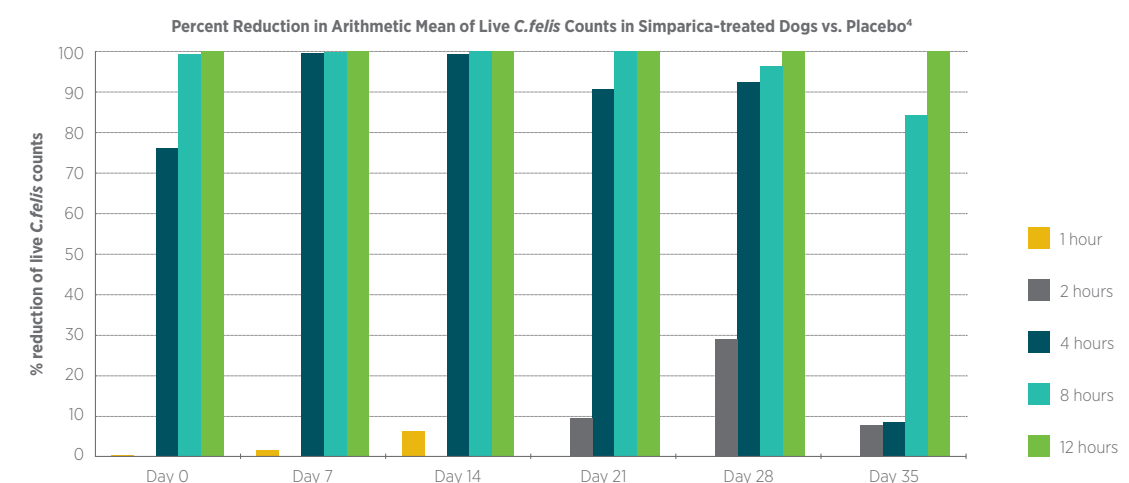
Persistent killing activity

Simparica provides **persistent flea killing activity for at least 35 days**¹, acting beyond the monthly treatment period, helping to minimise the potential risk of protection gaps.



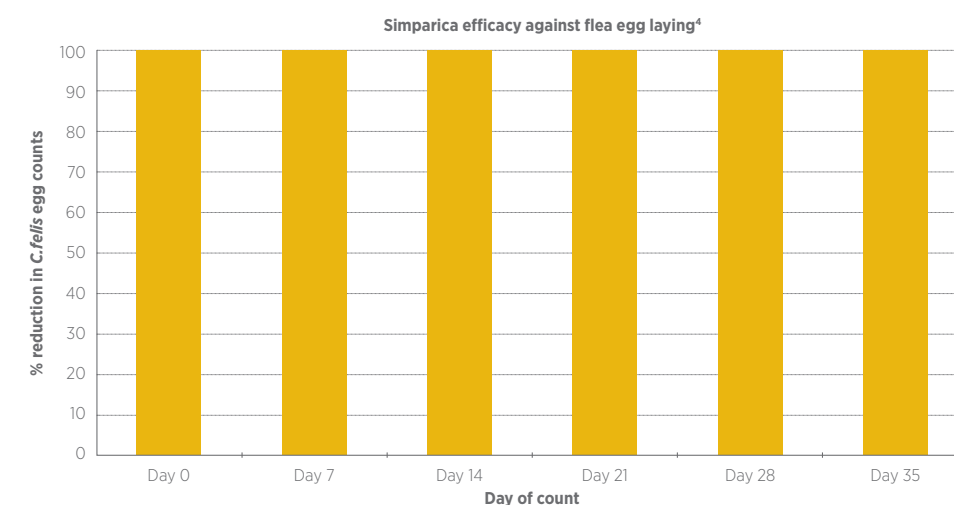
Immediate sustained killing activity

Simparica has been shown to start killing fleas within 3 hours⁴ and **kills 95% of fleas within 8 hours** for 28 days after product administration.¹ Reducing flea feeding time is key in controlling the clinical signs of FAD.



Prevents environmental flea egg contamination

The immediate and persistent flea killing activity of Simparica results in preventing environmental flea egg contamination¹.



Simparica
(sarolaner) chewable tablets

How does Simparica perform on ticks?



Action against the most prevalent species

A national government tick surveillance scheme found that *Ixodes ricinus* (71%), *Ixodes hexagonus* (27%), *Dermacentor reticulatus* (1%) and *Rhipicephalus sanguineus* (<1%) make up 99% of ticks that affect dogs in the UK.⁵ Only Simparica is indicated to kill all four.¹



Ixodes ricinus^{6*}

Hosts

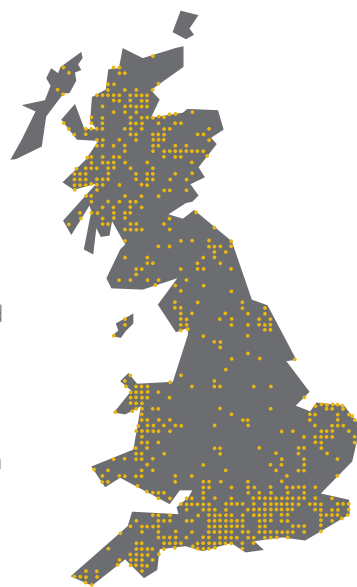
Wild and domestic small-large mammals, birds and reptiles and amphibians

Habitat

Grassland, moorland, heathland and woodland. Found in suburban/urban areas

Disease transmission

Lyme disease and Anaplasmosis



Ixodes hexagonus^{8*}

Hosts

Hedgehogs, foxes, ferrets, dogs, cats, rodents and occasionally birds

Habitat

On the host or in the nest. Present in suburban/urban areas

Disease transmission

Lyme disease and Anaplasmosis



Dermacentor reticulatus^{7*}

Hosts

Domestic and wild animals, e.g. dogs, horses, cattle, foxes, hares and hedgehogs

Habitat

Grasslands, pastures and woodlands

Disease transmission

Babesiosis



Rhipicephalus sanguineus^{9*}

Hosts

Dogs, cats and foxes but also recorded on cattle, rabbits, hares, hedgehogs and squirrels

Habitat

Kennels and other sheltered places

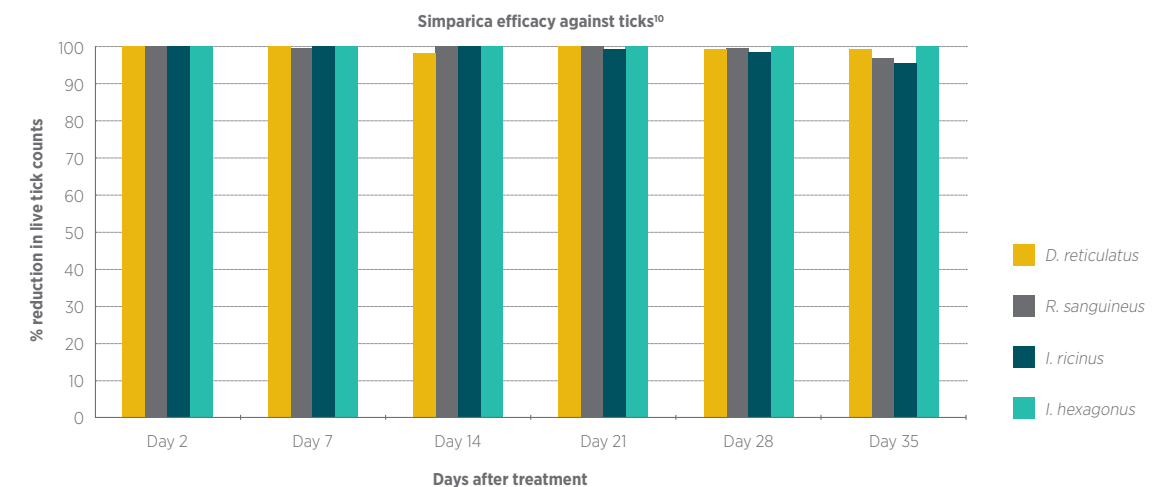
Disease transmission

Ehrlichia

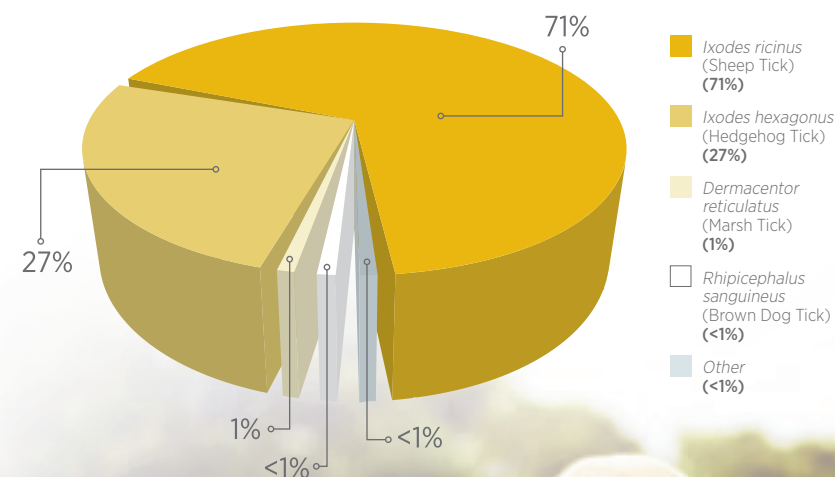


Persistent killing activity

Simparica provides **persistent tick killing activity for at least 35 days**, acting beyond the monthly treatment period, helping to minimise the potential risk of protection gaps.



Prevalence of ticks in the UK that affect dogs⁵



Immediate sustained killing activity

Simparica kills ticks (*I. ricinus*) within **12 hours** of attachment for 28 days after product administration.¹¹ Speed of kill is important in reducing the risk of transmission of tick-borne disease.

* Areas with no records do not necessarily represent areas of absence of ticks, but simply that no records have been received from that location.

How does Simparica perform on mites?

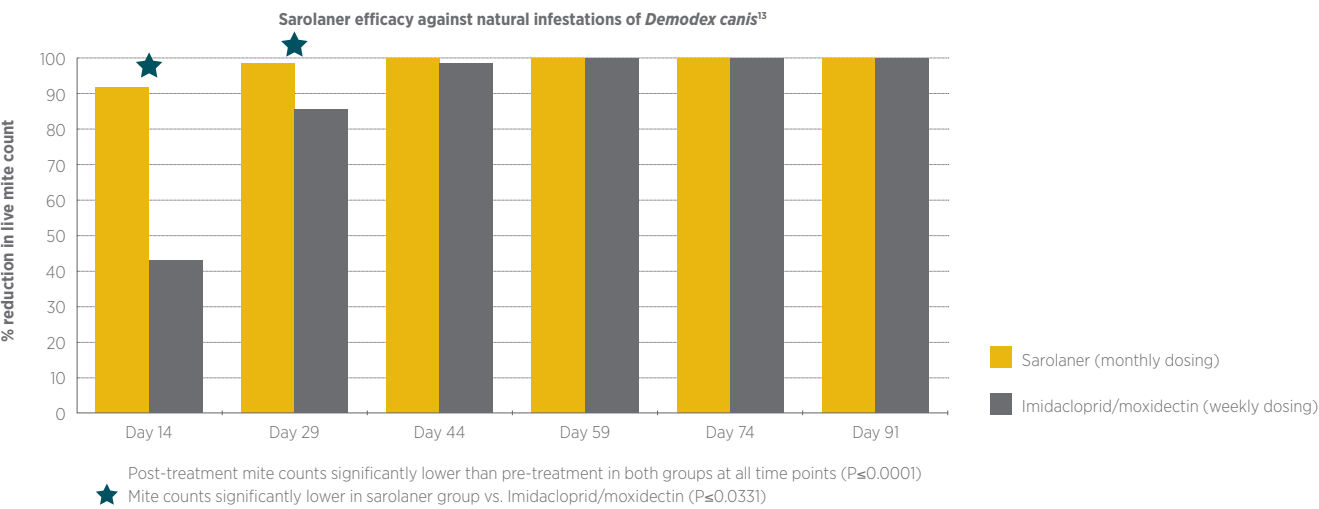
Simparica: Efficacious against Sarcoptic mange

Dogs with natural infestations of *Sarcoptes scabiei* were given 2 monthly treatments of Simparica, as a result no mites were identified on skin scrapings in any of the dogs post treatment.¹²

Simparica aids in the resolution of clinical signs of sarcoptic mange.¹²

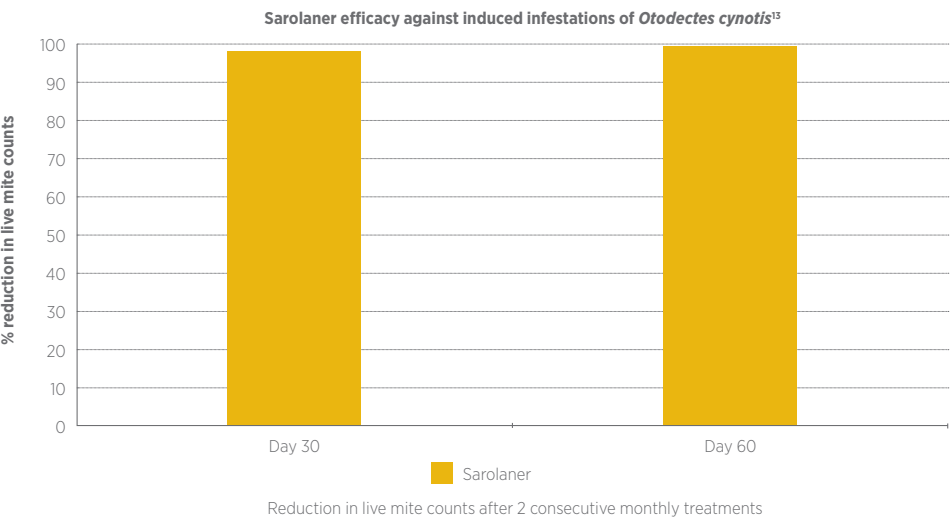
Clinical signs	% of dogs with clinical signs			
	Day 0	Day 14	Day 30	Day 60
PRURITUS	100%	80.1%	42.3%	2.0%
ERYTHEMA	96.2%	75.5%	38.5%	5.9%
PAPULES	94.3%	60.4%	30.8%	2.0%
SCALING/CRUSTING	100%	94.3%	51.9%	11.8%
ALOPECIA	100%	100%	88.5%	25.5%

Simparica: Shown to be active against Demodex canis in laboratory studies¹



This is not a licensed indication but was shown to be effective as outlined in the Simparica SPC in section 5.1, ‘pharmacodynamic properties’.

Simparica: Shown to be active against Otodectes cynotis in laboratory studies¹



This is not a licensed indication but was shown to be effective as outlined in the Simparica SPC in section 5.1, ‘pharmacodynamic properties’.



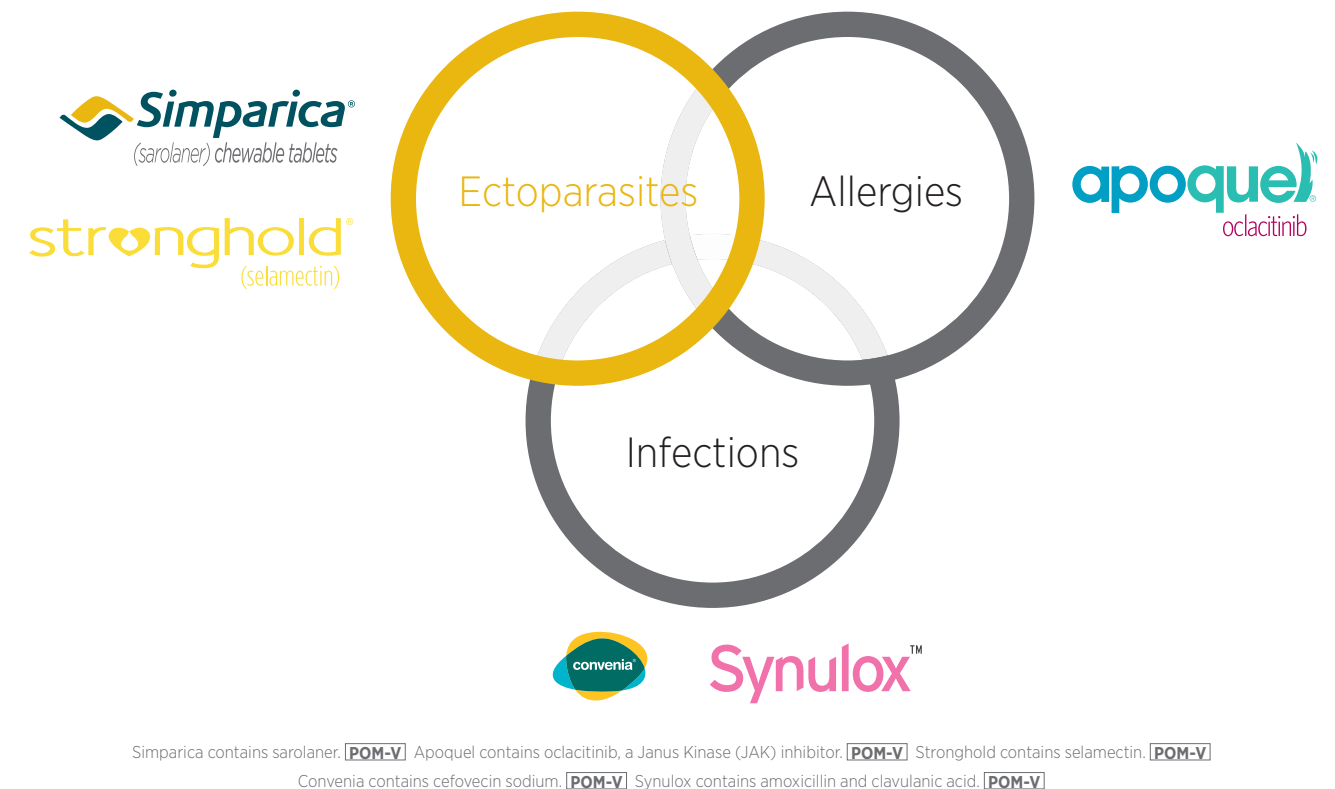
Simparica: A comprehensive ectoparasite solution in dermatology

- Provides **immediate and persistent** flea and tick killing activity for at least 35 days, acting beyond the monthly treatment period¹, helping to minimise the potential risk of protection gaps
- Kills fleas before they can lay eggs, preventing environmental flea egg contamination¹
- Can be used as part of a treatment strategy for the control of Flea Allergy Dermatitis (FAD)¹
- Extended spectrum of activity including Sarcoptic mange and shown to be active against *Demodex canis* and *Otodectes cynotis* in laboratory studies¹
- Systemic action provides an ideal solution for dogs that require regular bathing



Ideal for dogs that require regular bathing

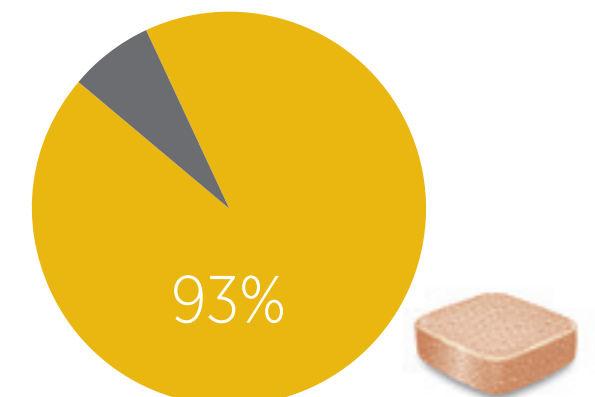
Part of a comprehensive range of Zoetis dermatological solutions



Simplicity and satisfaction in a savoury bite

- Simparica is a tasty, hard chewable tablet readily accepted by dogs
- Can be given with or without food¹
- In European field studies Simparica was highly palatable with 93% of doses voluntarily consumed by client owned dogs within 1 minute of being offered

GREAT-TASTING PROTECTION:
Voluntary full consumption within one minute¹⁴



Simparica
(sarolaner) chewable tablets



Simparica: The range



Bodyweight (kg)	Tablet strength (mg sarolaner)	Number of tablets to be administered
1.3 - 2.5	5	One
> 2.5 - 5	10	One
> 5 - 10	20	One
> 10 - 20	40	One
> 20 - 40	80	One
> 40	Appropriate combination of tablets	

Not all parasiticides are created equally

Simparica: Well tolerated in dogs

	Safety information¹
Age	Can be used in dogs from 8 weeks of age
Weight	Can be used in dogs from 1.3kg of bodyweight
Adverse Events	None at a maximum dose of 4mg/kg
Margin of Safety	In one overdose laboratory study, transient and self-limiting neurological signs were observed in some animals: mild tremors at 3 times the maximum exposure dose and convulsions at 5 times the maximum exposure dose. All dogs recovered without treatment.
Breeds	Simparica is well tolerated in Collies with a deficient multidrug-resistance-protein 1 following single oral administration at 5 times the recommended dose.
Concurrent medication	Simparica may be used in combination with other routine veterinary medications, including milbemycin oxime, moxidectin and pyrantel pamoate (in these studies efficacy was not investigated).

The safety profile of Simparica was extensively studied in both laboratory and field studies, performed worldwide. These studies overall involved more than 3000 doses of Simparica administered to over 1500 dogs.

		Orals				Topicals	
		3 treatment pack	3 treatment pack	3 treatment pack	1 treatment pack	3 treatment pack	3 treatment pack
		Simparica¹	NexGard Spectra¹⁵	Comfortis¹⁶	Bravecto¹⁷	Advocate¹⁸	Frontline Combo¹⁹
Fleas							
C. felis	% of ticks affecting dogs⁵	105 days	105 days	84 days	84 days	84 days	168 days
C. canis		105 days	105 days	-	-	-	168 days
Prevents flea egg production		Yes	Yes	Yes	Yes	-	Yes
Onset of effect		Within 8 hrs†	Within 24 hrs	Within 0.5 hrs	Within 8 hrs	Within 24 hrs	Within 24 hrs
Ticks							
I. ricinus	71%	105 days	84 days	-	84 days	-	84 days
I. hexagonus	27%	105 days	-	-	-	-	-
D. reticulatus	1%	105 days	84 days	-	84 days	-	84 days
R. sanguineus	<1%	105 days	84 days	-	56 days	-	84 days
Onset of effect		Within 12 hrs‡	Within 48 hrs	-	Within 12 hrs^	-	Within 48 hrs
Mites							
S. scabiei		Yes	-	-	-	Yes	-
D. canis		Activity (SPC section 5.1)	-	-	-	Yes	-
O. cynotis		Activity (SPC section 5.1)	-	-	-	Yes	-
Age at first use		8 weeks	8 weeks	14 weeks	8 weeks	7 weeks	8 weeks
Minimum weight		1.3kg	2kg	1.3kg	2kg	1kg	2kg

† for 28 days after product administration
¹ for 28 days after product administration (I. ricinus)
^ for I. ricinus

